



Schindler

Extreme weather protection

Preparing your elevators & escalators



During a season in which weather can be potentially hazardous, it's important that building and facility managers take the proper precautions to help prevent elevator damage and protect the safety of building occupants.

Consider the following tips before, during and after weather-related events.

Initial preparations

– Have a diagram showing the location of your elevators, car numbers and the elevator car phone number in your designated security area.

– Have Schindler’s emergency phone number along with any required numerical designations.

– Inspect the elevator machine room’s ventilation openings, windows and doors for possible rain leakage. If, during the inspection, water leakage is found, prevent water from reaching electrical panels by installing metal splash guards around ventilation openings and weather stripping around any machine room doors that open to the outdoors.

Before a storm hits

If a storm is near, there are steps that should be taken immediately to prevent damage to elevator equipment. Schindler personnel can provide assistance if needed.

1. Close all vents and openings in the top of the hoistway to prevent water from entering the elevator shaft.

2. Barricade machine room windows as necessary, and make sure no occupants are left in the building that are reliant on elevators for egress.

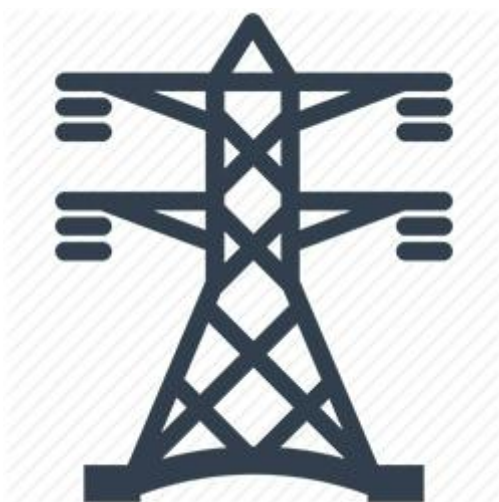
3. If the building has elevators that are enclosed, managers should run each car to the center of the building, or to the top floor for two-story buildings.

4. Elevators exposed to the outdoors should always be run to the floor below the top.

5. After cars are parked appropriately, shut the elevator down with the keyed switch and close the doors to prevent unauthorized personnel from using the equipment.

6. Place the mainline disconnect in the "off" position to completely remove power from the elevator. There is one switch for each elevator and it is usually located adjacent to the machine room or closet door.

For 24-hour service call 1-800-225-3123



Prepare for power problems



During a storm and once it has passed

- Become familiar with the elevator's emergency systems.

- Ensure that the elevator has surge protection or is operating with a reliable emergency power generation system backup, or an emergency return system for hydraulic, machine room-less or traction elevators.

- Make sure emergency lighting and a telephone are operable.

Wind-driven water can disable elevators and lead to dangerous passenger entrapments. Once skies are officially clear, check for water on the control panels or in the machine room before restoring power. Also check the pit area for water damage. Schindler can help you gain access to the pit area if needed. If water is found, don't resume operation until Schindler provides a thorough inspection. Be sure to open any vents or openings at the top of the shaft if you sealed them just before the storm.



Plan ahead

Because weather conditions can be unpredictable, Schindler recommends facility and building managers take these precautions and set up a process ahead of time in order to secure safety of the equipment and its occupants. Practice sessions should be conducted during lowdemand hours of the elevator system and in the presence of a supervisor within the facility, or trained elevator technician.

Your local Schindler team can assist you with your planning efforts or post-storm inspections.