

|||·PRO

The Power of Truth

NEW

MANAGE YOUR DIGITAL EVIDENCE WITH i-PRO



i-PRO SECURE CITIES

i-PRO PUBLIC SAFETY AND INTELLIGENT SURVEILLANCE SOLUTIONS, WORKING TOGETHER FOR LAW ENFORCEMENT AND MUNICIPALITIES

The i-PRO Secure Cities program delivers the most comprehensive portfolio of industry leading technologies combined with highly experienced engineering, sales and support personnel who understand the demands and challenges municipalities face today. By seamlessly integrating our best-in-class law enforcement technologies, imaging solutions, video and access management platforms, and intelligent analytics, the i-PRO Secure Cities program greatly enhances security and municipality operations. And it offers the performance, reliability, cost-efficiency and personal privacy local government officials and citizens can trust.

The i-PRO Secure Cities program provides innovative solutions for:

- Law Enforcement Digital Evidence Capture and Management
- Municipal/Law Enforcement Surveillance and Security
- Traffic Monitoring
- Public Health and Safety Compliance
- Public Events and Venues
- Mass Transportation Hubs
- Schools and Universities

A COMPREHENSIVE SECURITY SOLUTION FOR A SAFER CITY

The i-PRO Secure Cities program is a comprehensive initiative designed to provide the best in technology, incentives, tools and ongoing support. Our technology experts can help public safety and local government officials navigate the entire process of implementing smart technologies for smart city applications – defining needs, setting budgets, and securing funding for system design, installation, implementation and support.

Here's what makes the i-PRO Secure Cities program different:

- One Partner
- Contracts and Grants
- Complete Solution
- Upgrade Program
- 60 Years Experience
- U.S.-Based Tech Support
- Training & Support
- Advanced Features

From our new body-worn camera with a 12H field-swappable battery and evidence management solutions for the new age of law enforcement, to our comprehensive offering of open-platform surveillance and security system solutions, the i-PRO Secure Cities program delivers the best in integrated systems technology and superior personalized support to keep municipalities running safer and smoother.



NEW i-PRO BODY-WORN CAMERA BWC4000 WITH DETACHABLE BATTERY



Built on i-PRO Americas Inc.'s tradition of video surveillance excellence for law enforcement, the new and improved i-PRO body-worn camera with a detachable battery keeps your officers on the street. Featuring a two-piece design, the BWC4000 is IP67 / MIL-STD-810H rated to provide officers with a more reliable way to capture video and audio evidence in nearly any condition.

i-PRO's BWC4000 records in 1080P / 720P and seamlessly integrates with i-PRO's Unified Digital Evidence™ management software. The BWC4000, in unison with i-PRO's in-car video systems and fixed-surveillance cameras, forms a unified evidence management platform that preserves the chain of custody.

KEY FEATURES

NEW Detachable Battery

NEW H.264 / H.265 Video Compression

NEW MP4 Video File Format

NEW LCD Menu for Tagging

Rugged IP67 and MIL-STD-810H Architecture

1080p / 720p / 360p Resolution

16:9 & 4:3 Aspect Ratio

4 Microphones for Advanced Noise Reduction

Compatible with ICV4000 In-Car Video System

Built-in GPS, WLAN and Bluetooth LE

GENERAL

Model Number	i-PRO Body-Worn Camera WV-BWC4000
HARDWARE SPECS	
Dimensions (H x W x D)	3.37 x 2.75 x 0.94 Inches / 86 x 70 x 24 mm
Weight	6.0 oz
Drop Test	6' Rating
Waterproof Rating	IP67 (IEC60529)
Field of View / Aspect Ratio	[16:9 Mode] Horizontal: 137 ° Vertical: 79 ° (Diagonal: 157°) [4:3 Mode] Horizontal: 115 ° Vertical: 87 ° (Diagonal: 143°)
Video Storage	128GB Internal SD, Media Lock on SD Storage Card
Image Stabilization	6-Axis Gyro, Selectable on Playback
Battery / Battery Life	Li-ion Detachable / 12 Hours Standard Runtime
Warranty	Main Unit: 3 Years, Battery: 1 Year
Operating Temperature	-20°C to +50°C [-4°F to +122°F]

VIDEO / CAMERA / AUDIO

Video Resolutions Available	[16:9] 1080P / 720P / 360P [4:3] 1200P / 960P / 480P
Video Format	MPEG-4 Part 14
Robustness	MIL-STD-810H Salt Fog, Vibration, Shock, Temperature
Frame Rate (FPS)	30 fps
Low Light Sensitivity	0.08lx Color
Microphones	4 with Advanced Noise Reduction
Audio Format	AAC
Pre-Record Video	Configurable up to 3 Minutes

ACCESSORIES / OPTIONS

WV-BWC4000	Body-Worn Camera
WV-BWC40D8	8 Bay Docking Station and Charger Only (Require IPS-BWC-AC100W)
IPS-BWC-CTB	Common Trigger Box + Power Cable (VPU MK3 Installations Only)
IPS-BWC-ETH-NOPOE	3' Ethernet NoPoE for VPU MK3 /CTB Installations Only
IPS-BWC-ETH-NOPOEX	25' Ethernet NoPoE for VPU MK3 /CTB Installations Only
WV-BWC40D1A	Single Dock Vehicle or In-Station (Requires 12V Harness or AC)
IPS-BWC4-12V-WIRE	12V Wiring Harness for Single Dock or Single Charge in Vehicle
IPS-ICV-ETH25GRN	25' Ethernet for Single Dock in Vehicle
WV-BWC40C1A	Single Battery Charger Only (Requires 12V Harness or AC)
WV-BWC40C8	8-Bay Battery Charger Only (Require IPS-BWC-AC100W)
WV-BWC40B1	BWC4000 Spare Battery
IPS-BWC4-MNT-KIT	BWC4000 Mount Kit
IPS-BWC-AC100W	110W AC Adapter for 8-Bay Dock and 8-Bay Charger
IPS-BWC-AC65W	65W AC Adapter for Single Dock and Single Charger
IPS-BWC-8DOCWALL	Wall Mount for 8-Bay Docking Station
IPS-BWC-8CHGWALL	Wall Mount for 8-Bay Battery Charger
IPS-BTS-SENSOR	Holster Sensor for BWC Record Triggering

RUGGED IP67 AND MIL-STD-810H ARCHITECTURE

i-PRO's body-worn camera features rugged-built quality with an IP67 rating and MIL-STD-810H architecture, so the evidence capture continues uninterrupted, even in the most challenging outdoor environments, and it utilizes the versatile Klick Fast™ mounting system.

VIDEO/RESOLUTIONS AVAILABLE [16:9] 1080P / 720P / 360P [4:3] 1200P / 960P / 480P

Recording evidence in 1080p, 720p and 360p, the i-PRO BWC4000 provides crystal-clear video that accelerates convictions in court.

HANDS-FREE RECORDING ACTIVATION

i-PRO's BWC4000 is activated via wireless LAN or Bluetooth from a variety of triggers. Options include light bar, siren, G-force sensor, among others. Integration with the ICV4000 in-car system allows the recording to start simultaneously on the vehicle and body-worn systems.

ADDITIONAL FEATURES

- One Touch Record
- LCD Screen
- Time/Date Stamp
- File Tagging Menu
- Media Password Protection / 256AES
- Recharge Time 4 Hours
- GPS Location Tagging and Time Sync
- Wireless LAN IEEE 802.11 a/b/g/n/ac
- Embedded Bluetooth LE V4.1
- In-Car Video Integration
- FIPS 140-2 Security Standard
- Docking Station Single/8 Bay



WV-BWC40D1A



WV-BWC40D8



WV-BWC40C8



WV-BWC40C1A



WV-BWC40B1



IPS-BWC-CTB

NEW i-PRO ICV4000 FHD & VC35 (AS-1) FRONT CAMERA



ICV4000 360° FHD

The new i-PRO Americas Inc. ICV4000 360° FHD in-car digital video recording system offers industry-leading image quality for unmatched critical mobile video evidence capture. The WV-VC35 Full HD 1080p front camera delivers amazing clarity and color reproduction even in low light. The ICV4000 system supports up to four additional HD cameras, for complete 360 degree situational awareness.

- Full HD 1080p high-quality video evidence capture
- Unparalleled 360 degree recording and viewing
- Supports up to two 512GB solid state drives with 256AES encryption
- Full integration with the BWC4000 Body Worn Camera, with field swappable battery
- Compatible WV-VC35 front camera offers full color in extreme low-light conditions, with
- Compatible WV-VC35 front camera offers industry-leading, high resolution, 86 degree wide-angle FOV
- Available wireless microphone transmits quality audio up to one mile
- Compatible with Unified Digital Evidence (UDE) On-Premise and ClouDE Hosted DEMS

KEY FEATURES

- NEW** Improved Hi-Speed Video Processor
 - NEW** MP4 Video File Format
 - NEW** Built-in GPS, Dual 802.11ac Wi-Fi Support, and Bluetooth 4.2LE
 - NEW** Dual SSD Capability Up to 1TB with 256 AES Encryption
- Tested to MIL-STD-810H Standards
- 1080p / 720p / 360p Configurable Resolution
- Compatible with i-PRO Public Safety VC30, VC31, VC32, VC35, and VCF41P Cameras
- Record up to five High-resolution Cameras at the Same Time

GENERAL

Model Number	WJ-VPU4000
VIDEO RECORDER SPECIFICATIONS	
Dimensions (W x H x D)	7.0" (W) x 3.44" (H) x 6.1" (D)
Weight	4.0 lbs
Durability	Rugged Design to Withstand Extreme Heat and Vibration MIL-STD-810H, UL62368
Operating Temperature	-10°C to +50°C {14°F to +122°F}
Operating Humidity	10% to 80% (Non-Condensing)
Video Storage	256GB / 512GB SSD i-PRO Only, 2 Bays Removable / Lockable, Up to 1TB
Media Encryption	256 AES
Video File Format	MP4
Video Compression	H.264
Audio	3 Input Channels RCA Connectors, Using AAC
Power Input	12VDC Operating Range 10.0-16.0VDC
Power Consumption	12VDC (Max w/5 Cameras) 56.4W
Interface	5-100Mbps Ethernet, 2-1Gbps Ethernet, 1-100Mbps BWC Dock Radar-RS232C, Analog Audio-In-Car Mic, 2x-Analog for Wireless Microphone
Wireless	802.11a/b/g/n/ac 2x Modules 2x Antennas each, 2.4GHz/5GHz
Bluetooth	Bluetooth 4.2 LE
GPS	Built-in, SMA Connector
GPIO	16 Inputs, 4 Outputs
Impact Sensor	Built-in WV-VC35 Front Camera, Configurable Sensitivity
Mounting Bracket	Bracket Included for Trunk / Console Mounting
Antenna	Accessory - 6 Lead Shark Fin, 4x-2.4/5GHz, 1x-BT, 1x-GPS
Battery Backup Unit	Included - 50W Capacity Automatic Switching / Configurable Shutdown
Warranty	Main Unit: 3 Years, Battery Backup Unit: 1 Year

ACCESSORIES / OPTIONS

WJ-VPU4000	VPU4000 Recording Unit Only
IPS-ICV4-ACC	VPU4000 Accessory/Cable Kit - Includes: <ul style="list-style-type: none"> ■ 256SSD w/256 AES Encryption ■ Power Distribution Box & Cables ■ Battery Backup Unit ■ 3 Ethernet 25' Cables (Black, Yellow, Blue)
IPS-ICV4-256SSD	256GB SSD w/256 AES Encryption
IPS-ICV4-512SSD	512GB SSD w/256 AES Encryption
IPS-ICV4-ANT-BL	Antenna Shark Fin 6-in-1 Antenna, Bolt-On, Black
IPS-ICV4-ANT-WH	Antenna Shark Fin 6-in-1 Antenna, Bolt-On, White
WV-VC35	Front Compact Wide Angle Camera
WV-VC32	Side/Rear Camera (Also Order Side Cable ARB-CABLSIDE)
WV-VC31	Back Seat Camera with Infrared
WV-VC30	Front 30x Zoom Camera
ARB-M90	Wireless Mic Transmitter/Receiver/Desktop Charger Kit 900MHz
ARB-M24	Wireless Mic Transmitter/Receiver/Desktop Charger Kit 2.4GHz



FRONT CAMERA (WV-VC35)

FEATURES

Resolution: Imaging Mode: 16:9
H.264 1920 x 1080 / 1280 x 720 / 640 x 360 / 320 x 180, 30fps

Zoom Range: 1x Optical; 3x Digital

Image Sensor: 1/3 CMOS

Low-light Capability:

Color: 0.03 lx (0.0028 footcandle) (F2.2, AGC: On [High])

B/W: 0.02 lx (0.0019 footcandle) (F2.2, AGC: On [High])

Angular Field of View: Horizontal: 86° Vertical: 46°

Auto Adjustments: Focus, White Balance

Day/Night: On / Off/Auto

AGC: On (Low) / On (Mid) / On (High) / Off

Weight: .43 lbs.

Dimensions: 4.5" (W) x 1.77" (H) x 1.45" (D) (Excluding Mount)

File Format / Compression: MP4, H.264 / H.265

G-Force Impact Sensor: Internal Built-In

CONTROLS (HARDWARE BASED)

Record: Front and Rear Record Indication Mode Button to Optimize for Lighting

CONTROLS (SOFTWARE BASED)

Manual Zoom

Auto Focus

Record (Front and Rear Record Indication on Hardware)

BACK SEAT CAMERA (WV-VC31)

FEATURES

Resolution: Imaging Mode: 16:9

H.264 1280 x 720 / 640 x 360 / 320 x 180, 30fps (Max)

Image Sensor: 1/4 MOS

Low-light Capability: B/W: 0.0 lx (When the IR-LED is Lit)

Infrared: Auto

Angular Field of View: Horizontal: 150°, Vertical: 93°

Auto Adjustments: White Balance

Day/Night: Auto

AGC: Auto

Wide Dynamic Range: Auto

Weight: 0.79 lb

Dimensions: .3.94" (W) x 1.69" (H) x 1.85" (D)

(Excluding Mount and Projecting Parts)

SIDE/REAR VIEW CAMERA (WV-VC32)

FEATURES

Resolution: Imaging mode: 16:9

H.264 1280 x 720 / 640 x 360 / 320 x 180, 30fps (Max)

Image Sensor: 1/4 MOS

Low-light Capability: Color: 1.5 lx | B/W: 1.0 lx

Angular Field of View: Horizontal: 150°, Vertical: 93°

Auto Adjustments: White Balance

Day/Night: Auto

AGC: Auto

Wide Dynamic Range: Auto

Weight: 0.62 lb

Dimensions: .3.94" (W) x 1.69" (H) x 1.85" (D)

(Excluding Mount and Projecting Parts)

NEW i-PRO WV-VCF41P 4K SENSOR PANORAMIC FRONT CAMERA



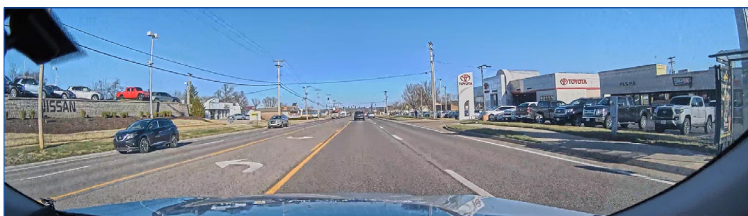
WV-VCF41P PANORAMIC FRONT CAMERA

The new i-PRO WV-VCF41P 4K Sensor Panoramic Front Camera harnesses the power of the advanced Ambarella AI vision processor for AI edge applications.

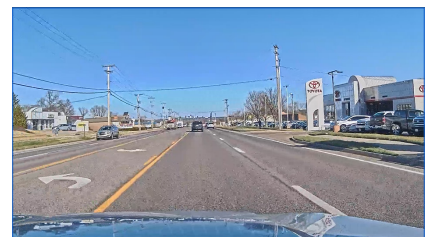
i-PRO reduces your storage requirements by focusing on the view you need in front of the vehicle. This extremely wide panoramic view captures high resolution video evidence that other cameras miss.

KEY FEATURES

- NEW** Panoramic 150° field of view for full windshield coverage
- NEW** 4K image sensor for Ultra HD image quality
- NEW** Enhanced lens and video processing for minimal edge distortion
- NEW** License plate readability maintained within a majority of the horizontal region
- NEW** Single button for Record/Stop with recording light indicator



WV-VCF41P (150° Field of View 32:9)



WV-VC35 (86° Field of View 16:9)

GENERAL

Model Number:	WV-VCF41P
Resolution:	Main Stream: 3840 x 1080p Bitrate: 14336, 10240, 8192 kbps 2560 x 720p Bitrate: 8192, 6144, 4096 kbps Live Stream: 1280 x 360p Bitrate: 4096, 2048, 1024, 768, 512, 256, 128 kbps 640 x 180p Bitrate: 4096, 2048, 1024, 768, 512, 256, 128 kbps
Pixels:	Approximately 8.4M effective pixels across the entire image sensor before trimming edges
Video CODEC:	H.264 / H.265 Ready
SoC:	Ambarella CV22
Scanning System:	Progressive
Zoom Ratio:	1x Optical; 3x Digital (x1, x1.5, x2, x3)
Focal Length:	3.1mm (1/8 inches)
Aperture:	1:1.8
Aperture Range:	F1.8 Fixed
Focus Range:	1.5m (59 inches) - ∞
Image Sensor:	1/1.8 CMOS Image Sensor
Aspect Ratio:	32:9
Field of View:	Horizontal: 150° Vertical: 40°
Low-light Capability:	Color: 0.16lx (0.0149 footcandle) (F1.8, AGC:On(High)) Monochrome: 0.12 lx (0.0112 footcandle) (F1.8, AGC: On(High))
Picture Mode:	SuperD, Night, Off
Gain (AGC):	On Low/Mid/High, Off
G-Force Sensor:	Internal Off, On (10 levels)
Auto Adjustments:	Auto White Balance
Focus:	Fixed
Day/Night:	On / Off / Auto
Buttons:	Single Record/Stop
LED Indicators:	Front and Rear to indicate recording (configurable)
Power Source:	PoE (IEEE802.3af compliant) via RJ45 connector
Power Consumption:	PoE DC 48V 180mA/Approx. 8.6W (Class 0 Device)
Operating Environment:	Temperature: -10°C to 50°C, 14°F to 122°F Humidity: 10% to 90% (no condensation)
Weight:	.52 lbs. (235g)
Dimensions:	4.60" (W) x 1.85" (H) x 1.18" (D)
Mounting Bracket:	Visor Plate, pivoting arm included
Compatibility:	WJ-VPU4000, UDE and CloUDE
Laptop Playback Requirements:	CPU: Intel@Core™ i5-7300U CPU @ 2.60GHz or faster. RAM: 16.00GB or more



NEW i-PRO BWC4000 HOLSTER TRIGGERING SENSOR



i-PRO Americas Inc. introduces the new BWC4000 holster triggering sensor. This new sensor ensures your BWC4000 will start recording instantly when your weapon is removed from your holster to capture every incident video. The BWC4000 holster triggering sensor uses a cryptographic key exchange over a secure Bluetooth channel, making it much more secure and reliable than other beacon technology. Plus, a rechargeable internal battery ensures you will never have to deal with a complicated battery installation, and the holster triggering sensor is automatic, which eliminates the use of buttons and switches.

GENERAL

Model Number	IPS-BTS-SENSOR
HOLSTER SENSOR SPECIFICATIONS	
Dimensions (L x W x H)	2.35" (L) x 0.85" (W) x 0.57" (H)
Weight	10 Grams
Durability	Waterproof IP67
Operating Temperature	-10°C to +60°C {14°F to + 140°F}
Battery	Internal Rechargeable 62maH
Charging	USB Micro Cable Supplied, Full Charge in 8 Hours
Mounting	3M VHB Tape w/3M Activator
Indicators	LED: Charging - Red, Fully Charged - Green
Warranty	1 Year

COMPATIBLE WITH

- WV-BWC4000: i-PRO Body-Worn Camera
- Firearms and Conductive Energy Weapons (CEWs)

KEY FEATURES

Holster trigger can instantly start BWC4000 recording

Simple installation and operation to existing lethal weapon holsters

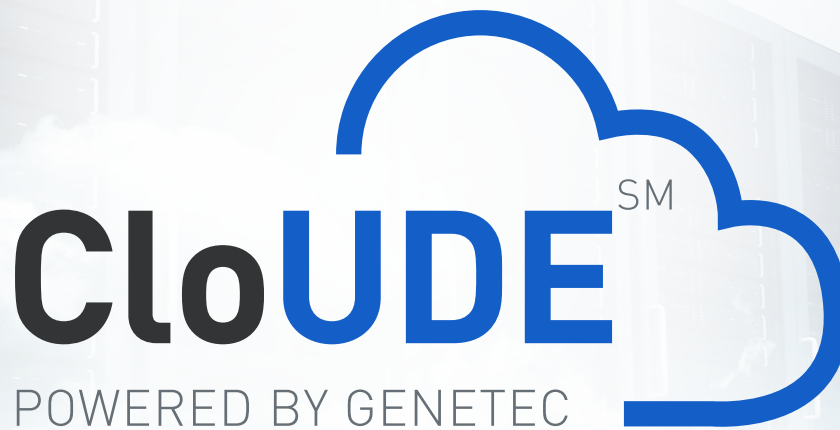
Rechargeable battery lasts up to four weeks without interruption and only needs charging every three weeks

Simple one-time Bluetooth pairing process

BWC automatically re-pairs with sensors when in range



Sensor installed on holster



CLOUD-HOSTED MANAGEMENT FOR YOUR DIGITAL EVIDENCE

i-PRO Americas Inc. introduces CloUDE powered by Genetec!

i-PRO, a global leader in advanced sensing technologies, and Genetec, the leader in video management, have come together to provide an open platform solution that offers you the choice between on-premises or cloud-hosted management for your digital evidence. i-PRO's CloUDE powered by Genetec is a digital evidence management system that facilitates collaboration between agencies, corporate departments, lawyers and the public. Grant immediate access to evidence and ensure that the information is only shared with authorized individuals.

Compatible with i-PRO's BWC MK3, BWC4000, Arbitrator360-HD, and ICV4000, i-PRO's CloUDE powered by Genetec gives you the ability to choose based on your needs and budgets, and you retain complete ownership of all your evidence and metadata.

KEY FEATURES

Centralize Digital Files in One App

Built-in Video Redaction

Video Conversion and Review

Upload Files from the Public

Maintain Chain of Evidence

Video Request Workflows

Powered by

Genetec



ON PREMISE

ON-PREMISE MANAGEMENT FOR YOUR DIGITAL EVIDENCE

i-PRO now offers you the choice between on-premise or cloud-hosted management for your digital evidence. i-PRO's UDE On Premise allows you to manage and store all of your digital evidence data at your facility. You choose the hardware and installation setup that fits your needs. All evidence files are encrypted and hashed, ensuring their security and integrity from capture to court to archiving. With i-PRO's UDE On Premise, you are in control of your data security policies, and you can access the information without logging in to an external cloud-hosted or storage environment.

i-PRO gives you the ability to deploy the best digital evidence management system based on your specific needs and budget, and you retain complete ownership of all your evidence and metadata.



i-PRO Americas Inc.

FOR TECHNICAL SUPPORT

support.h@i-pro.com
1.800.513.5417
M-F 7:00am – 7:00pm CST

**FOR MORE INFORMATION,
CONTACT US**

i-pro.com/us/en/publicsafety
i-PROPublicSafety@i-pro.com
1.877.803.8492