



COMPRESSED AIR / SUCTION / IMAGING / DENTAL CARE

The Technological Advantage for Dental Clinics and Universities

Dental compressed air and suction systems


PATTERSON[®]
DENTAL

AIR
TECHNIQUES equipped for life[®]

Superior Technology Matched with Exceptional Service

Air Techniques sets the benchmark for both compressed air and suction systems. As one of the leading manufacturers, we provide equipment solutions for large practices, dental clinics and universities with several hundred treatment, simulation and phantom workstations.

Individual Project Planning

Clinics need a consistent supply of compressed air and suction. This is where high performance with reliable reserves is required. A customized system project plan is necessary to ensure that the solution is precisely tailored to the clinics needs. Our service covers everything from consultation, planning, on-site installation, training and maintenance.

Comprehensive and Customized Service

Our experienced project managers can take on the development of your entire project. The seamless integration of individual compressed air and suction systems in the clinic depends on several factors. We take all your specific needs into account and determine the optimal equipment necessary for your specific application. Our team is there every step of the way to coordinate with architects, contractors, project planners and installers to make sure that everything comes together.



Consulting / Planning

Good consultancy and planning are the basis for the most appropriate design of all suction and compressed air systems.



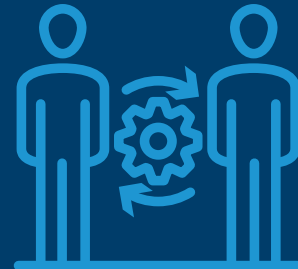
Selection Of Systems

Consistent oil-free compressed air systems for extremely dry, high quality air. Powerful and energy-efficient dental suction systems.



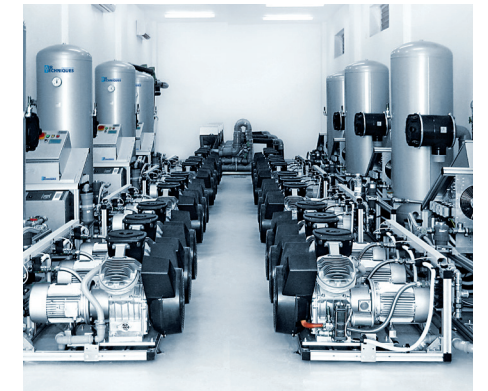
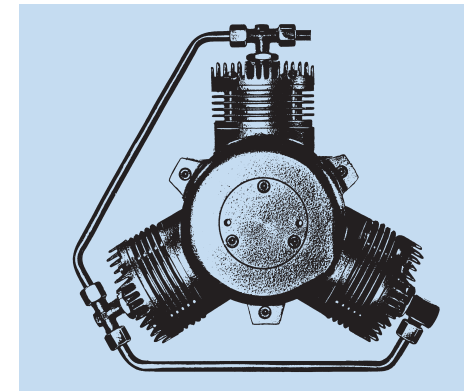
Installation/ Customization

Air Techniques technicians will assemble and install your systems in your practice while taking into account all safety regulations.



Training / After Sales

We won't leave you to fend for yourself after making your purchase – We offer training on a regular basis and provide a customer service, which will answer all your questions.



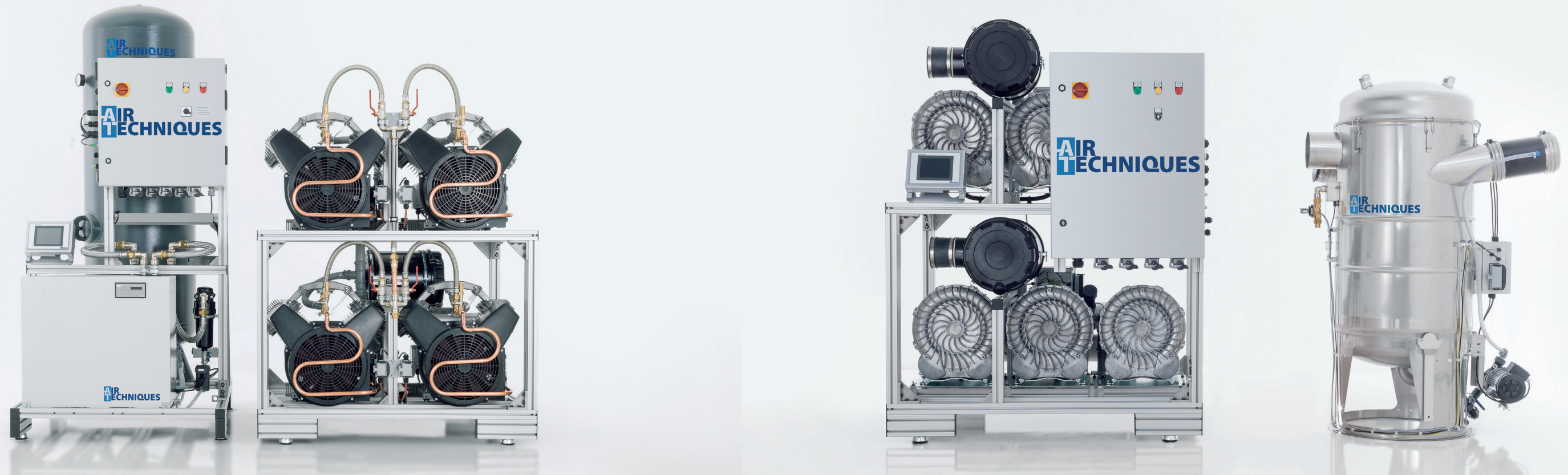
FOR OVER 55 YEARS:
100% COMMITMENT



WE NOT ONLY DEVELOP
INNOVATIVE SYSTEM SOLUTIONS
BUT ALSO THINK HOW TO PROVIDE YOU
WITH TROUBLE FREE DAY TO DAY
OPERATION OF YOUR CLINIC
WHILE DOING SO

Superior Quality for Compressed Air Systems

Clinic Suction Systems – Cutting Edge Technology



This is what matters:

- Premium compressed air: oil free, 100 % dry and hygienic
- Multiple compressor motors switch on and off according to clinical demand
- Redundancy matters : If one compressor motor experiences a malfunction, other motors will keep the clinic running
- Just one central bacteria suction filter needed for the entire system.

AirStar® Clinical Air Compressor Systems			
Part No.	AS60	AS90	AS120
Max Users @ 75%	55	80	105
Max Users @ 100%	40	60	80
Flow Rate @ 85 psi (CFM)	60	90	120
Flow Rate @ 100 psi (CFM)	56.6	84.8	113.1
Power Consumption (HP)	15.0	22.5	30.0
Panel Breaker (A)	40	50	60
Voltage (V)	3~ 480 VAC	3~ 480 VAC	3~ 480 VAC
Electrical Frequency (Hz)	60	60	60
Tank Volume (Gal)	120	120	120
Compressor Dimensions (W x H x D – inches)	51 x 38 x 41	51 x 71 x 41	51 x 71 x 41
Compressor Weight (Lbs)	505	835	1,055
Tank Module (W x H x D – inches)	39 x 82 x 51	39 x 82 x 51	39 x 82 x 51
Tank Module (Lbs)	700	700	700
Total Required Space (W x H x D – inches)	138 x 86 x 111	138 x 86 x 111	138 x 86 x 111

VacStar® Clinical Dry Vacuum Systems			
Part No.	VS60	VS75	VS90
Max Users @ 75%	65	83	100
Max Users @ 100%	50	63	75
Flow Rate @ 0 inHg (SCFM)	400	500	600
Flow Rate @ 8 inHg (SCFM)	250	310	370
Flow Rate @ 10 inHg (SCFM)	210	260	310
Power Consumption (HP)	24.8	31.0	37.2
Panel Breaker (A)	50	60	80
Voltage (V)	3~ 480 VAC	3~ 480 VAC	3~ 480 VAC
Electrical Frequency (Hz)	60	60	60
Pump Dimensions (W x H x D – inches)	58 x 70 x 53	58 x 70 x 53	58 x 70 x 53
Pump Weight (Lbs)	1,075	1,200	1,325
Tank Dimensions inch (ø/H – inches)	26 / 61	26 / 61	26 / 61
Tank Weight (Lbs)	175	175	175

This is what matters:

- Central separation unit made of high grade stainless steel
- The Automatic tank washout cycle will maintain a clean odor free separation tank.
- Cost effective use of power thanks to automatic switch on and switch off of suction motors according to actual operational times and the required volume flow
- Redundancy matters : If one motor experiences a malfunction, other motors will keep the clinic running

The Technological Advantage for Medium Sized Dental Clinics and Universities

Dental compressed air and suction systems designed for up to 60 operatories



This is what matters:

- Continual, constant suction, regardless of the number of simultaneous users
- Virtually eliminate water consumption
- Dramatically reduce power consumption
- Provide for easy installation and even easier expansion of your Mojave system as you grow
- Conserves electricity and prolongs the life of your pumps



Central Controller System

Mojave's exclusive Master Controller (MMC) automatically adjusts the frequency of the pump(s)

to maintain the required vacuum level depending on the needs of your dental facility.

Mojave® Clinical Dry Vacuum Systems

Part No.	V15	2V15	3V15	4V15
Voltage Range (Min/Max)	3~ 198-242	3~ 198-242	3~ 198-242	3~ 198-242
Horsepower	6.2	12.4	18.6	24.8
Max. Users @ 100%	15	30	45	60
Panel Breaker (A)	40	40 (x2)	40 (x3)	40 (x4)
Weight (Lbs)	Pump – 250 Tank – 175	Pumps – 250(x2) Tank – 175	Pumps – 250(x3) Tanks – 175(x2)	Pumps – 250(x4) Tanks – 175(x2)
Tank Dimensions (W x H x D inches)	25 x 42 x 23	25 x 42 x 23	50 x 42*** x 23	50 x 42*** x 23
Pump Dimensions (W x H x D inches)	32.5 x 23.5 x 26	32.5 x 47** x 26	32.5 x 47** x 26 + 32.5 x 23.5 x 26	32.5 x 47** x 26 (x2)

Note: 1 User = 1HVE or 2SEs / **Pumps Stacked / ***Tanks Side-by-Side

AirStar® Air Compressor System

Part No.	AS100
Max Users	14
Compressor Head	Twin 2.4 HP
Flow Rate @ 80 psi (CFM)	20.0
Tank Volume (Gal)	30
Voltage Rating (V)	220 - 3 Phase
Voltage (Min/Max)	198/242
Panel Breaker (A)	30
Wire Size (Gauge)	10
Weight (Lbs)	450
Compressor Dimensions (W x H x D – inches)	46 x 34.5 x 24.5

This is what matters:

- 100% oil-free, dry air performance
- Antimicrobial tank interior powder coating
- Quadruple filtered
- Membrane dryer technology
- Linear Teflon-bonded piston, long-stroke compression
- Can tandem 4 compressors into one system to serve up to 56 simultaneous users.

The Central Separation Tank – in stainless steel only from Air Techniques

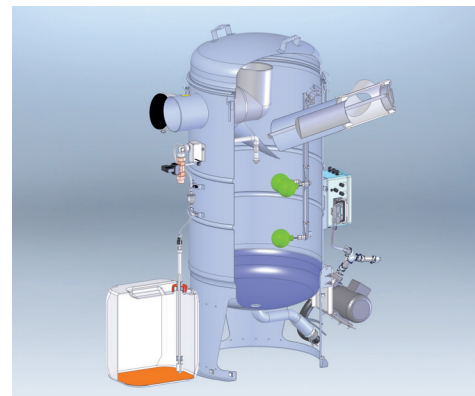
The Central Separation Tank collects all the secretion discharged from treatment stations, separates the mixture and provides clean air into the suction unit. Amalgam separation occurs after the tank in the CA 4 Amalgam Separators. An automatic integrated flushing and disinfection cycle also reduces the spread of germs inside of the tank.

Central remote monitoring

Central remote monitoring offers clear and comfortable querying of fault messages, operating hours, filter replacement, handling, etc. of all Air Techniques clinical air and vacuum systems (AirStar & VacStar Clinical systems only). Even the connection to the existing central control center can be carried out via potential free contacts.



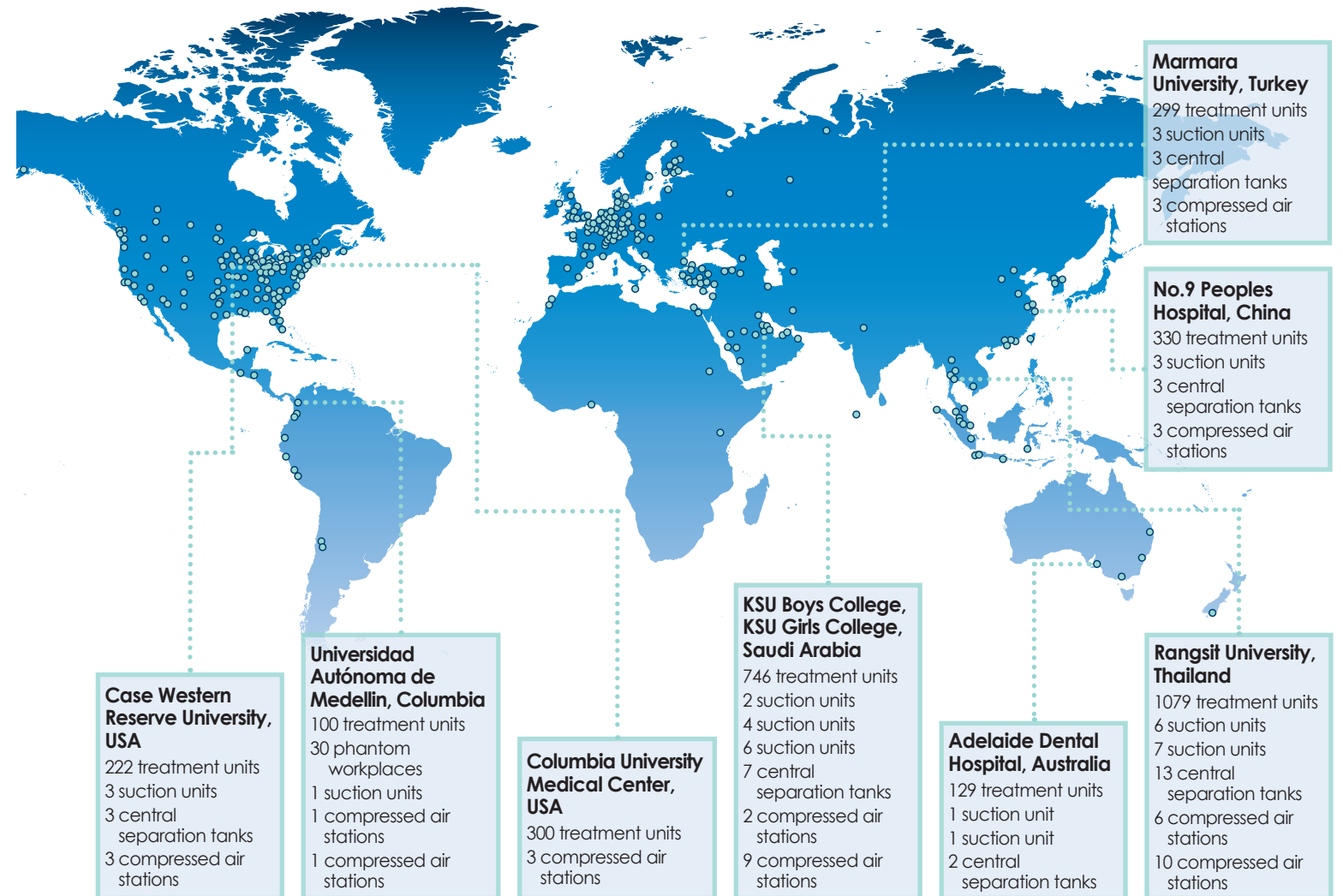
Optionally, a noise-reducing housing is available for AirStar Clinical series



Visual display for monitoring all functions from a central control station, e.g. in the technical room

WE ALWAYS STRIVE
TO PROVIDE THE BEST RESULTS
FOR OUR CUSTOMERS

Clinical Installations from Leading Dental Facilities around the World



PROJECTS IN THE UNITED STATES

Projects established in every major city in North America

PROJECTS WORLDWIDE

Austria	Czech Republic	India	Maldives	Saudi Arabia
Australia	Denmark	Indonesia	Malta	Singapore
Bahrain	Ecuador	Iran	Mexico	Switzerland
Belarus	Egypt	Ireland	Morocco	South Korea
Belgium	Finland	Italy	Netherlands	Spain
Bosnia-Herzegovina	France	Kenya	New Zealand	Syria
Cambodia	Georgia	Kuwait	Norway	Taiwan
Canada	Germany	Latvia	Oman	Thailand
Chile	Great Britain	Lebanon	Peru	Turkey
China	Guatemala	Lithuania	Poland	Turkmenistan
Columbia	Hungary	Malaysia	Russia	United Arab Emirates



For over 55 years, Air Techniques has been a leading innovator and manufacturer of dental products. Our priority is ensuring complete satisfaction by manufacturing reliable products and providing excellent customer and technical support. Whether the need is digital imaging, utility room equipment or merchandise, Air Techniques can provide the solution via our network of authorized professional dealers. Proudly designed, tested and manufactured in the United States, our products are helping dental professionals take their practices to the next level.

Air Techniques' products are distributed through authorized dealers only.

For more information contact:

John Ostipwko
National Government & Universities Sales Manager
Patterson Dental
Cell. 516.474.4884
Email. John.Ostipwko@Pattersondental.com

Shaun Taylor
North American Director of Institutional Sales
Air Techniques
Cell. 516.780.1374
Email. Shaun.taylor@airtechniques.com



CORPORATE HEADQUARTERS
1295 Walt Whitman Road
Melville, New York 11747- 3062
800-247-8324

Air Techniques, Inc.
© Copyright 2020
PN 9922-454 Rev. D

